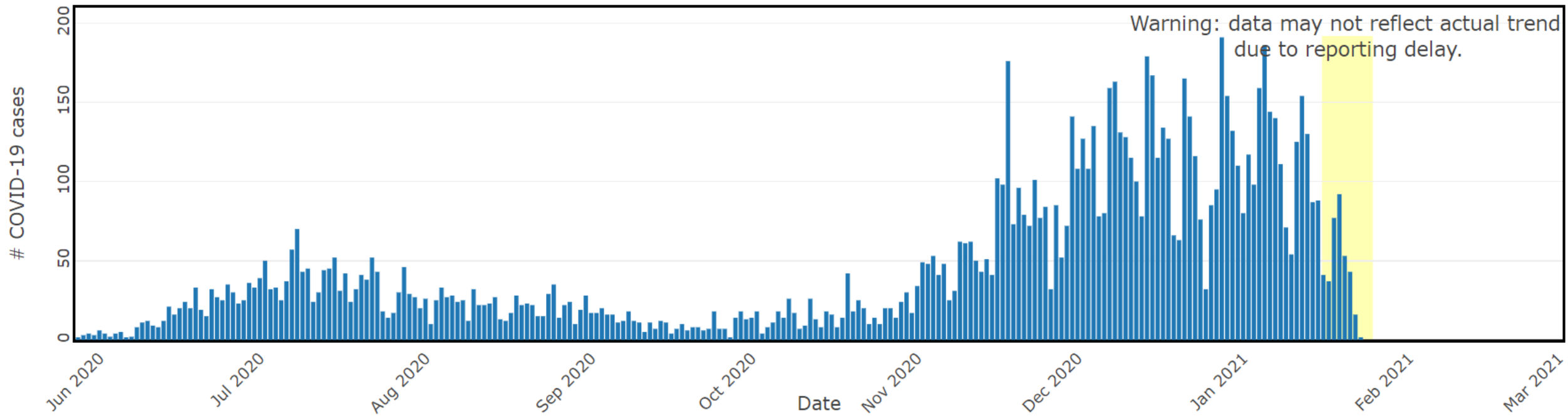


# Overview

- Blueprint Tier Status
- Revised School Guidance from CDPH
- COVID-19 Vaccine

# Daily COVID-19 cases in Yolo County decreasing but remain high.



# Blueprint metrics are improving.

## 1/26 Yolo County Metrics (Based on data for 1/10-1/16)

Adjusted case rate for tier assignment:

**21.6**

Unadjusted case rate:

**43.3**

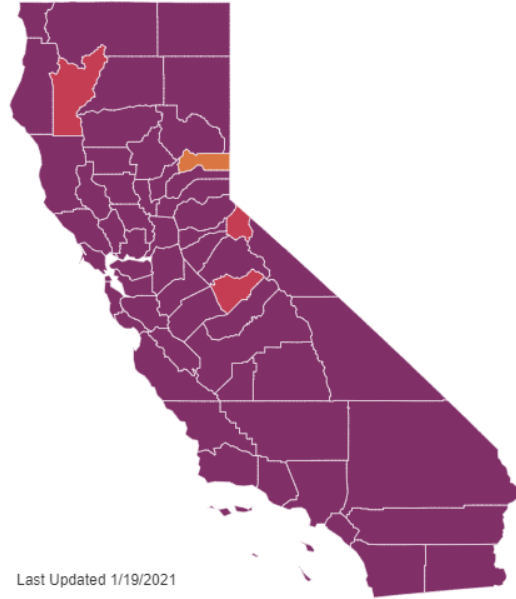
Positivity Rate:

**4.7%**

Entire County

**12.1%**

Health Equity Quartile



Last Updated 1/19/2021

## Prior Yolo County Metrics (1/19)

Adjusted case rate for tier assignment:  
**28.3**

Unadjusted case rate:  
**53.9**

Positivity Rate:  
**6.7%**

Entire County

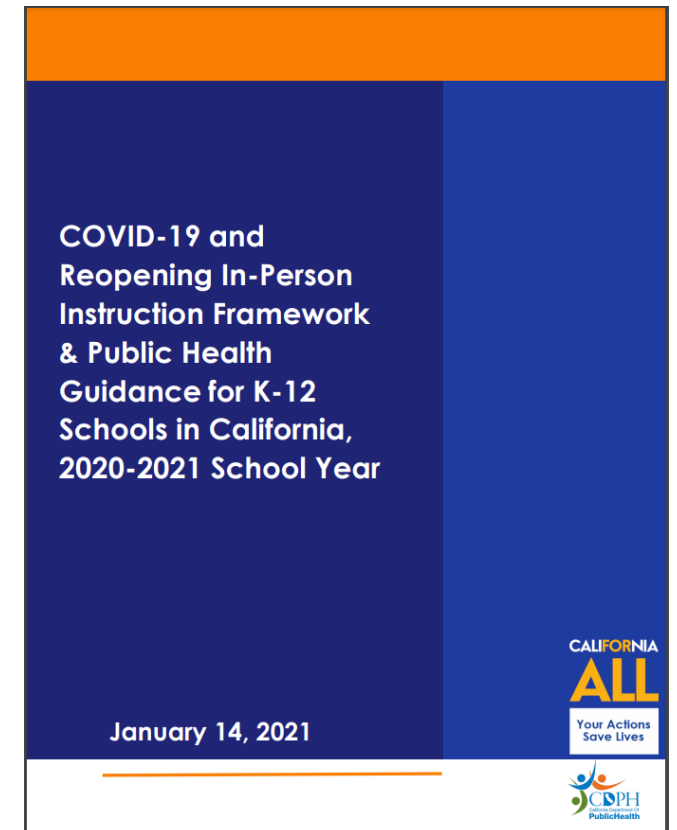
**14.6%**

Health Equity Quartile

County risk level	Adjusted case rate* 7-day average of daily COVID-19 cases per 100K with 7-day lag, adjusted for number of tests performed	Positivity rate** 7-day average of all COVID-19 tests performed that are positive	
		Entire county	Healthy equity quartile
<b>WIDESPREAD</b>  Many non-essential indoor business operations are closed	<b>More than 7.0</b> Daily new cases (per 100k)	<b>More than 8.0%</b> Positive tests	
<b>SUBSTANTIAL</b>  Some non-essential indoor business operations are closed	<b>4.0 – 7.0</b> Daily new cases (per 100k)	<b>5.0 – 8.0%</b> Positive tests	<b>5.3 – 8.0%</b> Positive tests
<b>MODERATE</b>  Some indoor business operations are open with modifications	<b>1.0 – 3.9</b> Daily new cases (per 100k)	<b>2.0 – 4.9%</b> Positive tests	<b>2.2 – 5.2%</b> Positive tests
<b>MINIMAL</b>  Most indoor business operations are open with modifications	<b>Less than 1.0</b> Daily new cases (per 100k)	<b>Less than 2.0%</b> Positive tests	<b>Less than 2.2%</b> Positive tests

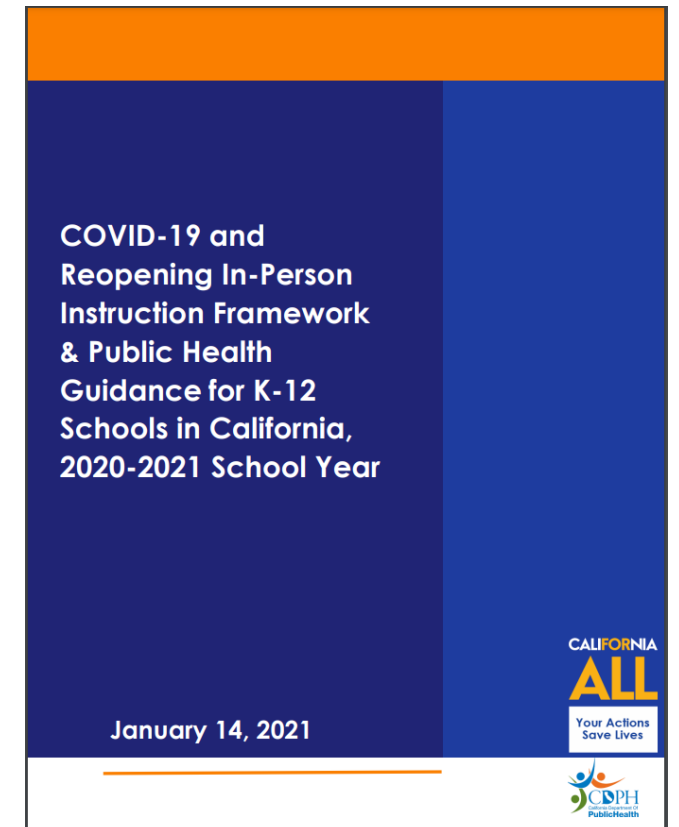
# CDPH issued new school guidance January 14th.

- [Consolidated guidance](#) replaces previous guidance, reopening framework, FAQs, and waiver process
- [Cohort guidance](#) still applies for stable groups  $\leq 16$
- [Youth sports guidance](#) updated January 25<sup>th</sup>



# Key Changes in Consolidated Guidance

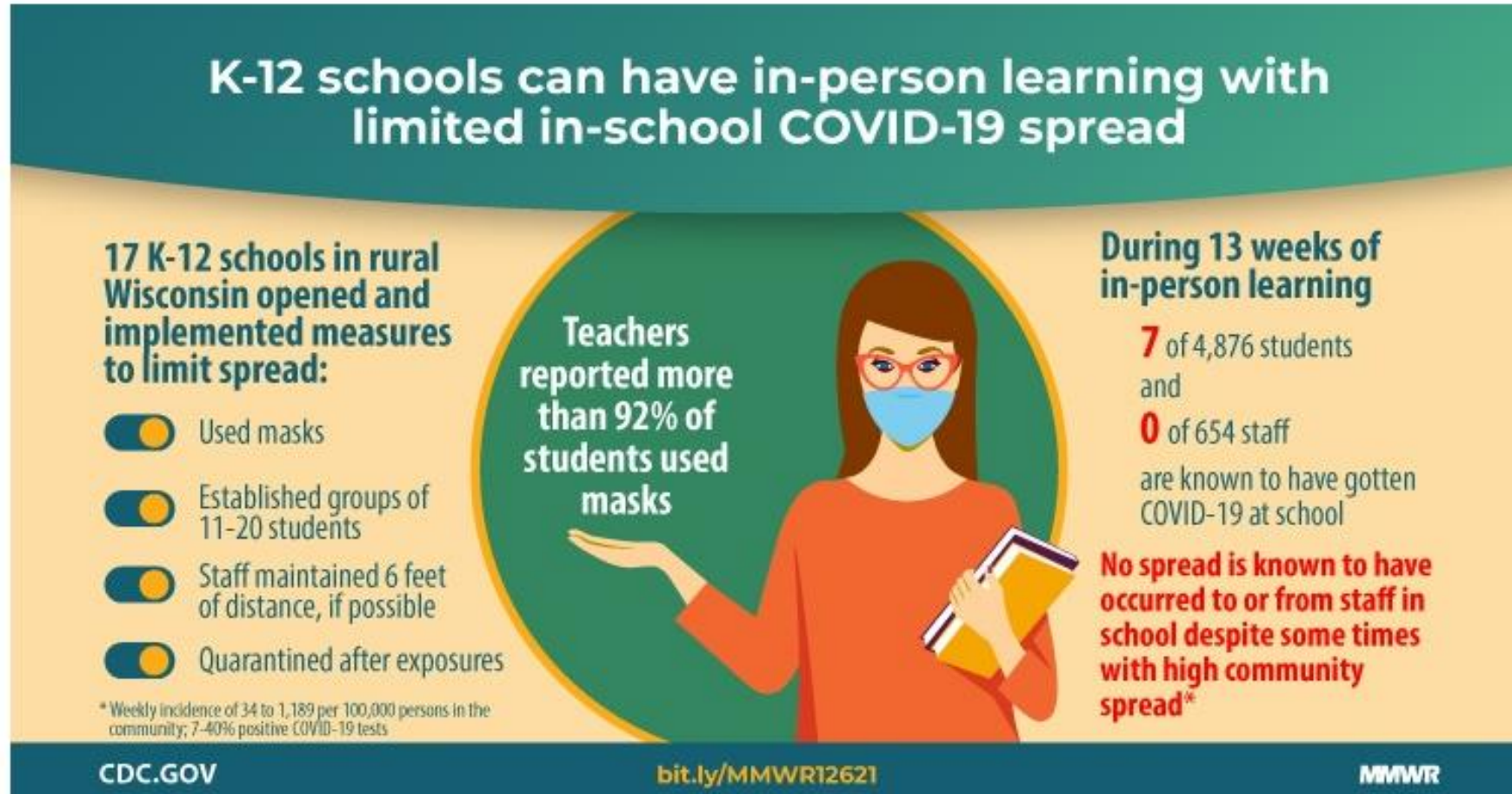
- K-6 schools can reopen if adjusted case rate <25/100,000 (Current Yolo aCR = 21.6)
- Must submit 2-part COVID-19 Safety Plan 7 days before reopening
- All students over 2 years old required to wear face coverings
- Minimum of 4 feet between student chairs
- Support for increased asymptomatic testing available from State



# Elementary school reopening is strongly encouraged.

- Increasing [evidence](#) that elementary schools can safely reopen.
- In-school transmission infrequent.
- Younger students benefit the most from in-person instruction.
- Younger students less likely to get infected or transmit virus.
- Younger students less likely to get severe COVID illness.
- In-person instruction has immediate health benefits.
- Education loss has long-term health consequences.

# Recent study from Wisconsin supports school reopening.

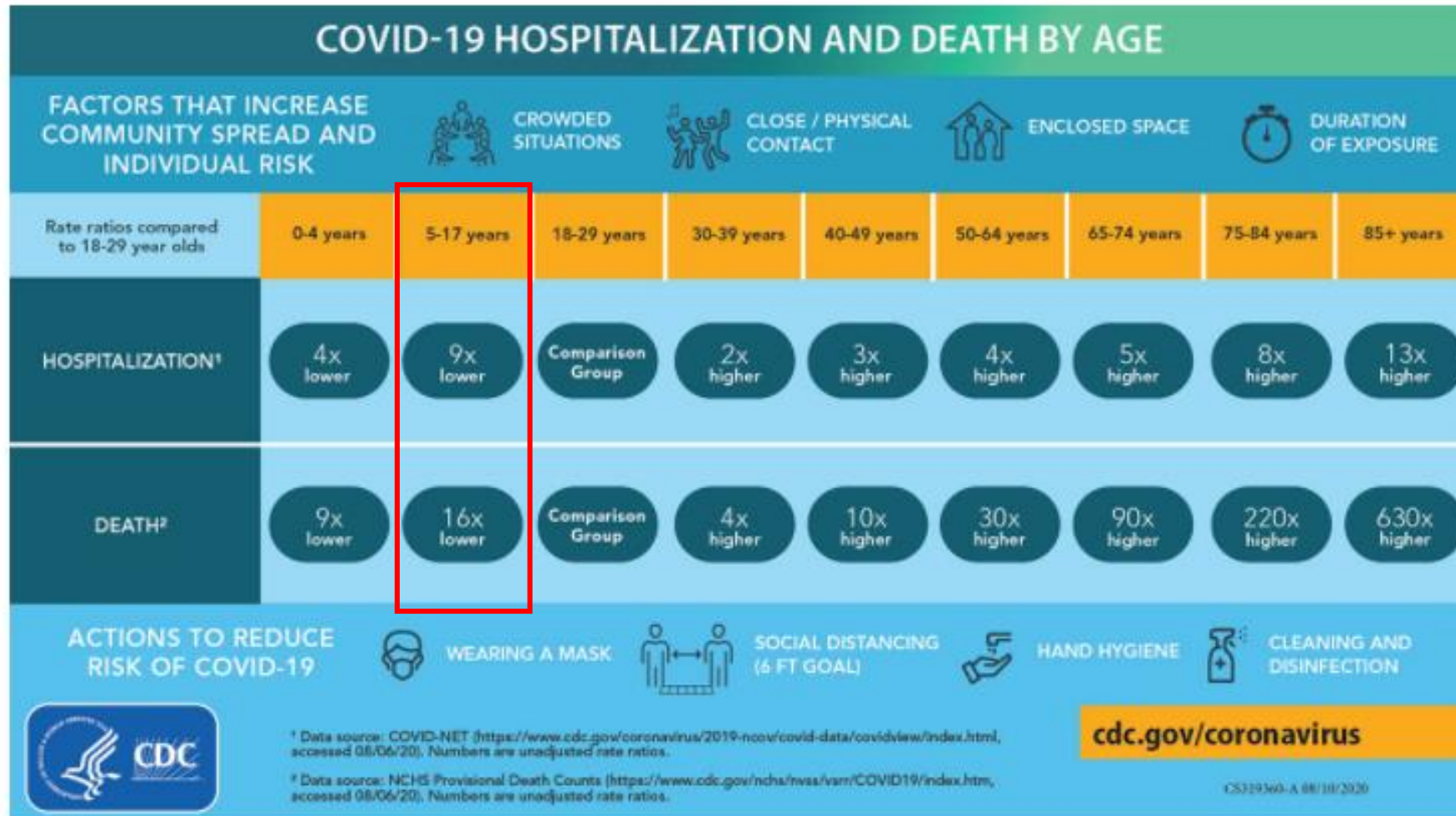


# Elementary school reopening is strongly encouraged.

- Increasing [evidence](#) that elementary schools can safely reopen.
- In-school transmission rare, mostly likely to be adult-to-adult
- Younger students benefit the most from in-person instruction.
- Younger students less likely to get infected or transmit virus.
- Younger students less likely to get severe COVID illness.
- In-person instruction has immediate health benefits.
- Education loss has long-term health consequences.



# School-aged children are at low risk of severe COVID-19.

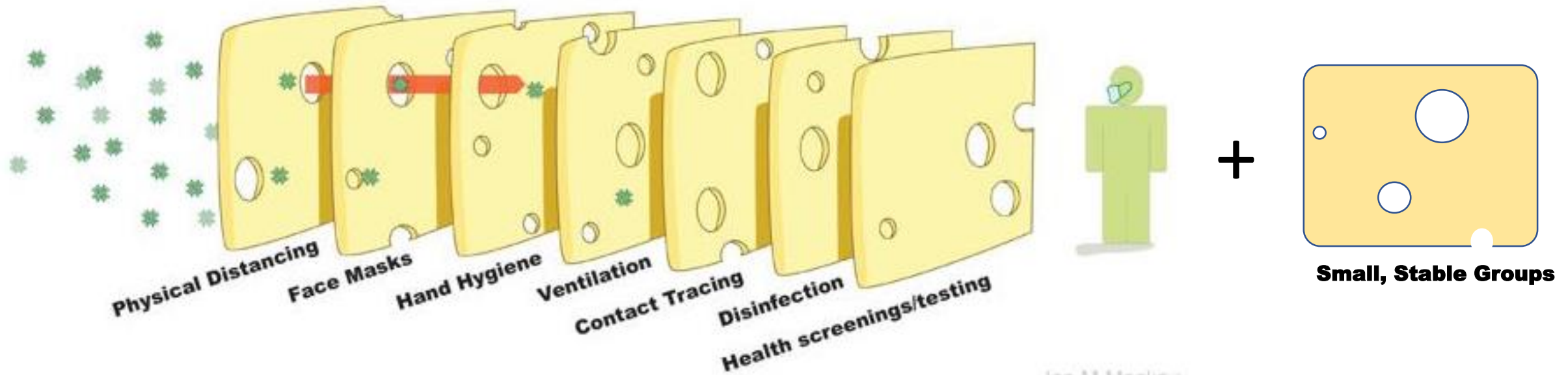


# Elementary school reopening is strongly encouraged.

- Increasing [evidence](#) that elementary schools can safely reopen.
- In-school transmission rare, mostly likely to be adult-to-adult
- Younger students benefit the most from in-person instruction.
- Younger students less likely to get infected or transmit virus.
- Younger students less likely to get severe COVID illness.
- In-person instruction has immediate health benefits.
- Education loss has long-term health consequences.

A layered approach protects against COVID-19.

# The Swiss Cheese Model of COVID-19 Defense



Ian M Mackay  
virologydownunder.com  
Derived from @sketchplanator  
Based on the Swiss cheese model of accident causation, by James Reason, 1990  
version 1.3  
update: 12oct2020

# Vaccine coming, but should not delay reopening.

- Two safe and effective vaccines available but supply extremely limited
- Education and child care staff are eligible for vaccine in Phase 1b, but not until after 65+ offered vaccine
  - Likely not for several months given 28,000 Yolo residents 65+
- Many California, U.S., and international schools reopened successfully before vaccine available

[www.yolocounty.org/coronavirus-vaccine](http://www.yolocounty.org/coronavirus-vaccine)

# Testing is required if accept State funding.

	<b>Yellow</b> CR <1.0* TP <2%	<b>Orange</b> CR 1-3.9* TP 2-4.9%	<b>Red</b> CR 4-7* TP 5-8%	<b>Purple</b> CR >7-13.9* TP >8%	CR >14*
<b>Staff</b>	Symptomatic and response testing.	Symptomatic and response testing.	Symptomatic and response testing + every 2 weeks asymptomatic testing.	Symptomatic and response testing + every 2 weeks asymptomatic testing.	Symptomatic and response testing + weekly asymptomatic (PCR or twice weekly antigen testing)**.
<b>Students K-12</b>	Symptomatic and response testing.	Symptomatic and response testing.	Symptomatic and response testing + every 2 weeks asymptomatic testing.	Symptomatic and response testing + every 2 weeks asymptomatic testing.	Symptomatic and response testing + weekly asymptomatic (PCR or twice weekly antigen testing)**.